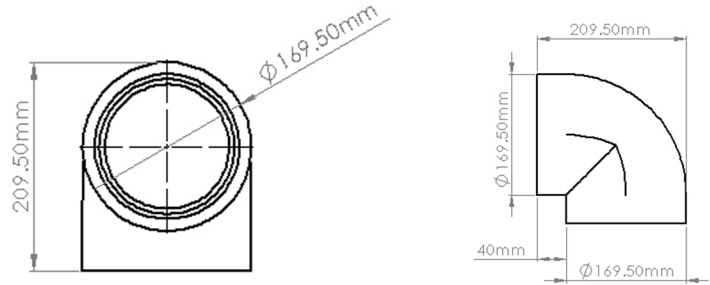
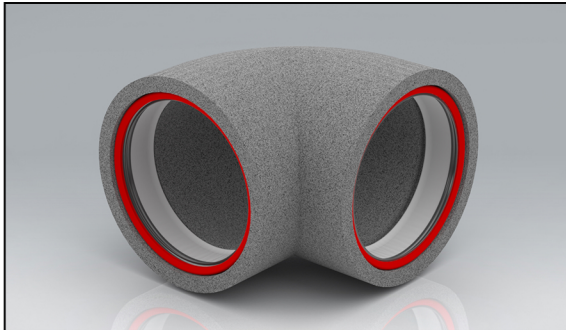


# PRODUCT DATA SHEET

## SST-125-90B-IND



Rapid Self-Seal Thermal 125mmØ 90° Round Bend



MANUFACTURER:	VERPLAS LTD
PART NUMBER:	SST-125-90B-IND
SIZE:	125mmØ
FOR USE WITH:	VERPLAS THERMAL 125
BOX QUANTITY:	6
INDIVIDUAL WEIGHT:	193g
COLOUR	Grey
MIN OPERATING TEMP	-15°C
MAX OPERATING TEMP	+60°C
THERMAL RESISTANCE	0.666 m <sup>2</sup> K/W
THERMAL CONDUCTIVITY	0.03 W/mK

### SPECIFICATION DETAILS

The Verplas Self-Seal Thermal SST-125-90B-IND insulated fitting is manufactured from graphite impregnated expanded polystyrene (EPS) with a density of 25kg/m<sup>3</sup> and provides a free area of 12,273 mm<sup>2</sup>. The SST-125-90B-IND is supplied with self-seal female couplings that allow the ducting fitted with a Duct to Fitting Connector to be plugged into the fitting apertures with a push, click and lock mechanism.

The Self-Seal female couplings are manufactured from prime High Impact Polystyrene and a Thermoplastic Elastomer Dynamic Sealing Gasket.

The EPS material is fully tested to meet the thermal conductivity requirements of BASF-EN13163 to assist with the prevention of condensation and is flame retardant to DIN 4102-B1.

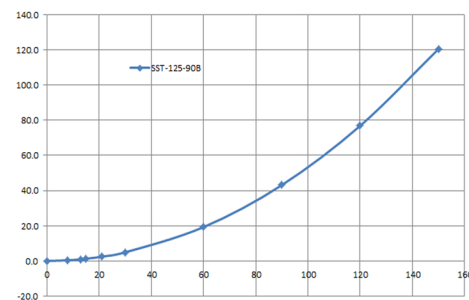
The patented push, click and lock mechanism provides a low leakage solution which exceeds the requirements set out in DW/143 Class A leakage test and DW/154 ductwork standards.

The Self-Seal Thermal is compliant with the requirements outlined in the Energy performance characteristics database for use in SAP with MVHR and MEV supply and extract ventilation systems.

AIRFLOW	RESISTANCE
8 l/s	0.40 pa
13 l/s	1.00 pa
21 l/s	2.40 pa
30 l/s	4.90 pa
60 l/s	19.20 pa
120 l/s	76.80 pa

### PERFORMANCE CURVE

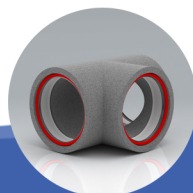
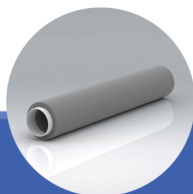
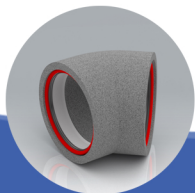
Pressure Loss Pascals (Pa)



AIRFLOW RATE (L/S)

### Associated Ancillaries

- SST-125-45B-IND  
125mmØ 45° Round Rapid Thermal Self-Seal Bend
- SST-125-1M-IND  
125mmØ Rapid Thermal Self-Seal 1m Pipe
- SST-125-TP-IND  
125mmØ Rapid Self-Seal Thermal T-Piece



Scan Here to find out how quick it is to install

