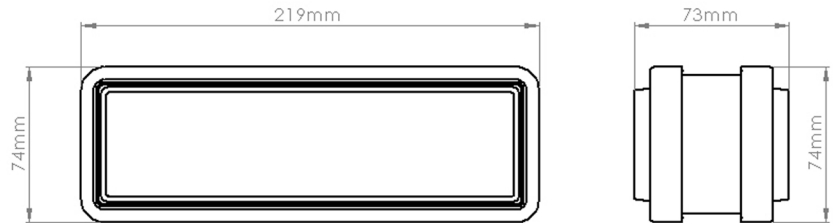
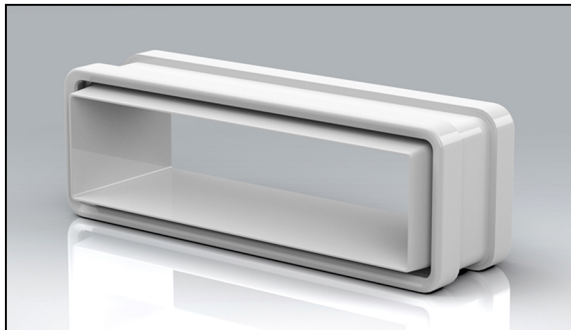


PRODUCT DATA SHEET

VSSC204DD



Rapid Self-Seal 204x60mm Duct to Duct Connector



MANUFACTURER:	VERPLAS LTD
PART NUMBER:	VSSC204DD
SIZE:	204x60mm
FOR USE WITH:	VERPLAS SYSTEM 204
BOX QUANTITY:	56
INDIVIDUAL WEIGHT:	209g
COLOUR	White
MIN OPERATING TEMP	-15°C
MAX OPERATING TEMP	+60°C

SPECIFICATION DETAILS

The VSSC204DD 204x60mm Rectangular Self-Seal Coupling Duct to Duct is manufactured from (white) High Impact Polystyrene and has a minimum free area of 9,750mm². The VSC204DD incorporates a gasket to reduce air leakage to an absolute minimum in connections between System 204 ducting.

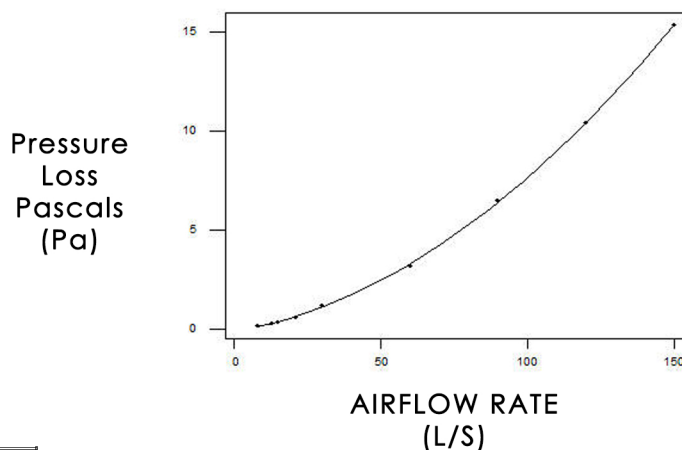
The VSSC204DD is fully compliant with SAP Appendix Q Product Characteristics Database recommendations for duct sizes used with both extract and Mechanical Heat Recovery Systems.

VSSC204DD is manufactured in compliance with Domestic Plastic Ductwork Specification DW/154 and does meet UL94HB flammability standard.

VSSC204DD has been designed for use with Verplas System 204.

AIRFLOW	RESISTANCE
8 l/s	0.13 pa
13 l/s	0.30 Pa
21 l/s	0.60 Pa
30 l/s	1.17 Pa
60 l/s	3.30 Pa
120 l/s	10.42 Pa

PERFORMANCE CURVE

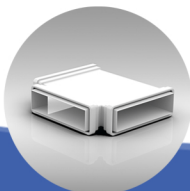


Associated Ancillaries

VSSC5630
204X60mm Rapid
Self-Seal T-Piece

VSSC204DF
204x60mm Rapid Self-Seal
Duct to Fitting Connector

VKC5629
204x60mm
2m Flat Channel



Scan Here
to find out
how quick
it is to install

