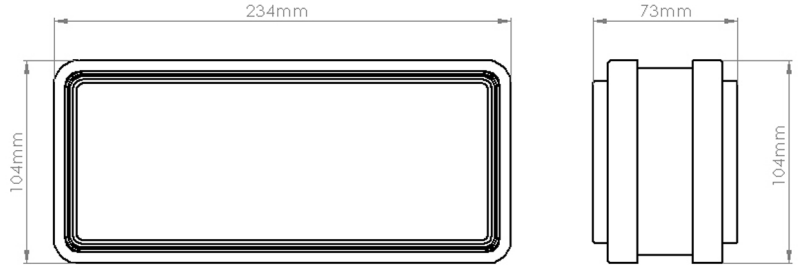
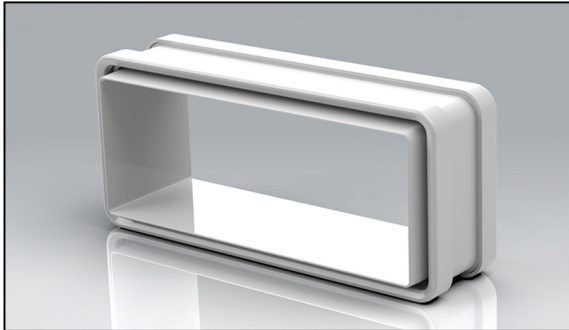


PRODUCT DATA SHEET

VSSC220DD



Rapid Self-Seal 220x90mm Duct to Duct Coupling



MANUFACTURER:	VERPLAS LTD
PART NUMBER:	VSSC220DD
SIZE:	220x90mm
FOR USE WITH:	VERPLAS SYSTEM 220
BOX QUANTITY:	36
INDIVIDUAL WEIGHT:	236g
COLOUR	White
MIN OPERATING TEMP	-15°C
MAX OPERATING TEMP	+60°C

SPECIFICATION DETAILS

The VSSC220DD 220x90mm Self-Seal Coupling Duct to Duct is manufactured from (white) High Impact Polystyrene and has a minimum free area of 16,790mm². The Self-Seal Coupling incorporates a gasket to reduce air leakage to an absolute minimum between System 220 ducting.

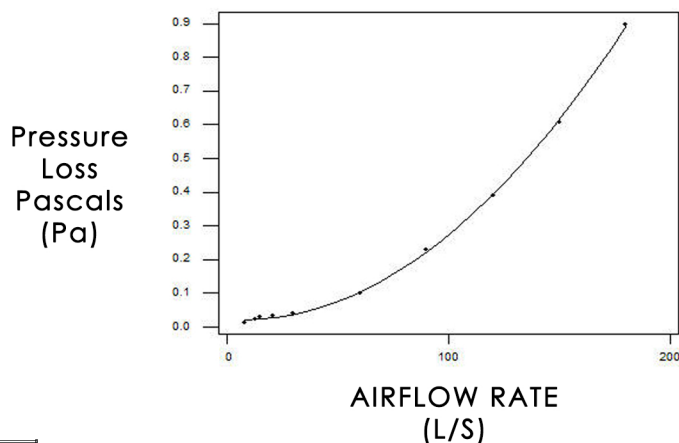
The VSSC220DD is fully compliant with SAP Appendix Q Product Characteristics Database recommendations for duct sizes used with both extract and Mechanical Heat Recovery Systems.

VSSC220DD is manufactured in compliance with Domestic Plastic Ductwork Specification DW/154 and does meet UL94HB flammability standard.

VSSC220DD has been designed for use with Verplas System 220.

AIRFLOW	RESISTANCE
8 l/s	0.013 pa
13 l/s	0.022 pa
21 l/s	0.035 pa
30 l/s	0.050 pa
60 l/s	0.10 pa
120 l/s	0.39 pa

PERFORMANCE CURVE



Associated Ancillaries

- VSSC5705
220x90mm Rapid Self-Seal
90° Horizontal Bend
- VSSC220DF
220x90mm Duct to
Fitting Connector
- VKC5729
220x90mm
2m Flat Channel



Scan Here
to find out
how quick
it is to install

