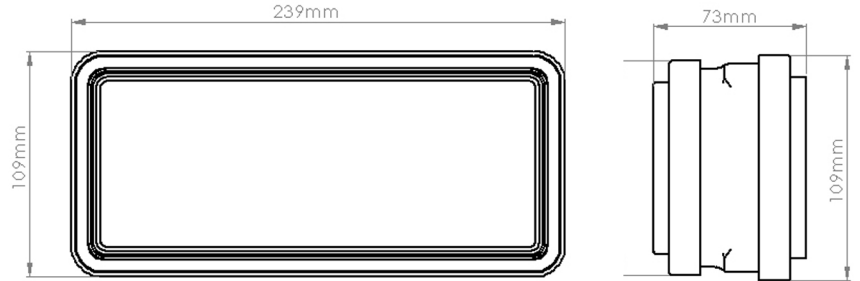
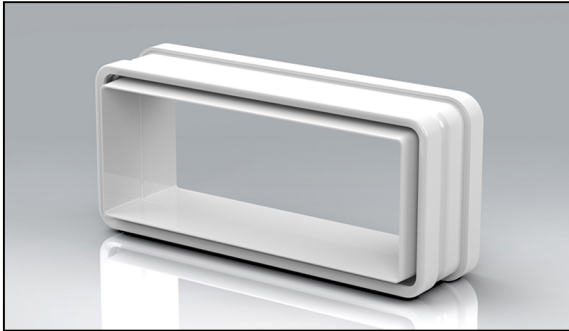


PRODUCT DATA SHEET

VSSC220DF



Rapid Self-Seal 220x90mm Duct to Fitting Coupling



MANUFACTURER:	VERPLAS LTD
PART NUMBER:	VSSC220DF
SIZE:	220x90mm
FOR USE WITH:	VERPLAS SYSTEM 220
BOX QUANTITY:	48
INDIVIDUAL WEIGHT:	235g
COLOUR:	White
MIN OPERATING TEMP	-15°C
MAX OPERATING TEMP	+60°C

SPECIFICATION DETAILS

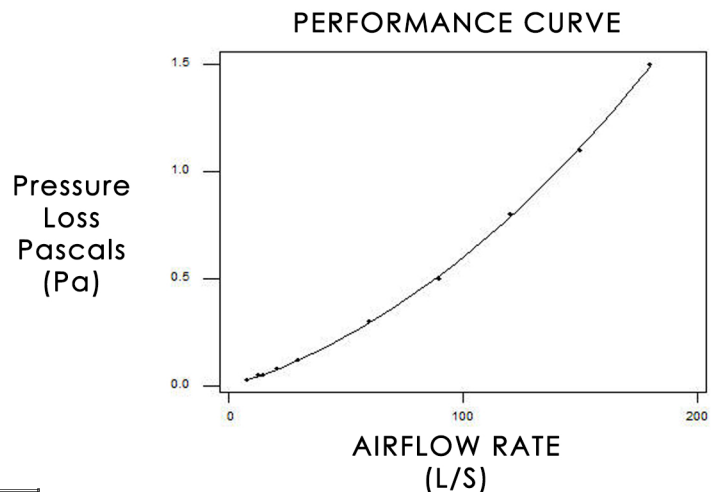
The VSSC220DF 220x90mm Self-Seal Coupling Duct to Fitting is manufactured from (white) High Impact Polystyrene and has a minimum free area of 16,790mm² (Duct Side) to 17,968mm² (Fitting Side). The Self-Seal Coupling incorporates a gasket to reduce air leakage to an absolute minimum between the System 220 ducting and the System 220 fittings.

The VSSC220DF is fully compliant with SAP Appendix Q Product Characteristics Database recommendations for duct sizes used with both extract and Mechanical Heat Recovery Systems.

VSSC220DF is manufactured in compliance with Domestic Plastic Ductwork Specification DW/154 and does meet UL94HB flammability standard.

VSSC220DF has been designed for use with Verplas System 220.

AIRFLOW	RESISTANCE
8 l/s	0.025 pa
13 l/s	0.046 pa
21 l/s	0.08 pa
30 l/s	0.12 pa
60 l/s	0.30 pa
120 l/s	0.80 pa



Associated Ancillaries

- VSSC5705 220x90mm Rapid Self-Seal 90° Horizontal Bend
- VSSC220DD 220x90mm Duct to Duct Connector
- VKC5729 220x90mm 2m Flat Channel

