



GAMME

MINIBLUE[®]

MINIBLUE
LOBBY[®]

CMV Office extraction units
Flow rate 50 to 3500 m³/h

02





EC MOTOR
(Direct Current), Flow rate 50 to 3500 m³/h


APPLICATION

- Air Extraction or blowing of commercial premises requiring low and medium speeds.
- ▲ Particularly suited in applications where there are dimensional constraints (low height) and acoustic requirements (acoustic treatment as standard) and very low consumption.
- ▲ **MINIBLUE®** units fitted with the EC motor (direct current) fulfil the requirements of directive ErP 2009/125/EC (2nd phase, 2015). The **MINIBLUE®** guarantees very low electrical consumptions.

RANGE

- Available in 4 sizes and 6 models, the **MINIBLUE®** range covers flow rates from 50 to 4000 m³/h.
- Available in two control modes, the **MINIBLUE®** range offers a suitable and optimal use of your facilities.
MINIBLUE® : standard version equipped with a potentiometer to adjust your operating point.
MINIBLUE LOBBY® : Version constant pressure self-regulated with the desired pressure setting and LCD display of the instantaneous pressure.

CONSTRUCTION

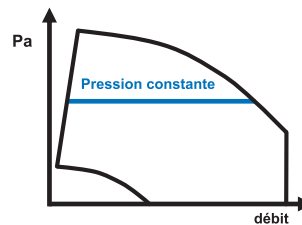
- Housing in galvanized steel sheet, thickness 10/10ths.
- ▲ Sound insulation with very high density rockwool insulation (120 kg/m³).
- Removable cover secured by four screws.
- ▲ Circular double-seal in line branch connections.
- ▲ Local padlockable switch fitted.
- Grommet for power cable.
- Unit fitted with feet with shaped slot for fixing .
- ▲ Factory-fitted with rails to accommodate a G4 filter (except **MINIBLUE®** 125 and 160).

MOTOR FAN

- Direct drive DC motor with high efficiency electrical commutation (EC) (ErP 2009/125/EC, 2nd phase 2015 compliant).
- **MINIBLUE®** 125 and 160 model: reaction turbine with single opening.
- Other models: impulse turbine with double opening.

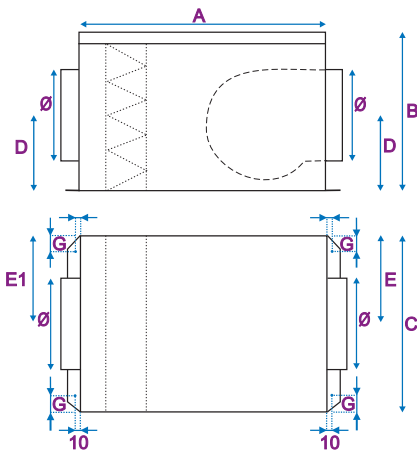
INSTALLATION

- Fitted with a rain hood, it can be installed outdoors.
- The unit can be used ceiling- or wall-mounted in all positions.
- Easy access to all internal parts.
- Usage temperature: 40° C.



VARIANT

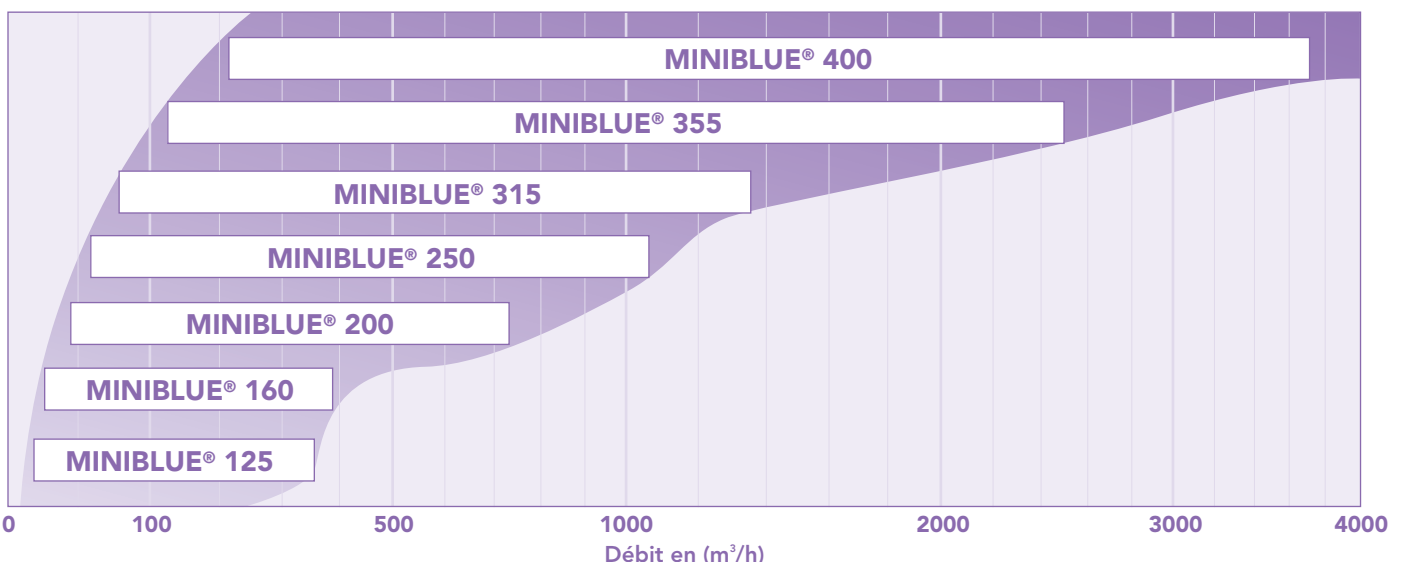
- ▲ G4 gravimetric filter, thickness 25 mm (except models 125 and 160). Average pressure drop across clean filter 45 Pa.



DIMENSIONS CHARACTERISTICS MINIBLUE®

Modèle MINIBLUE®	A mm	B mm	C mm	Ø mm	D mm	E1 mm	E mm	G mm	Poids appareil (kg)
125	460	200	350	125	115	255	255	60	11
160	460	200	350	160	100	245	255	60	11
200	350	295	400	200	180	200	200	60	14
250	350	295	400	250	150	200	200	60	15
315	470	385	450	315	210	225	225	60	23
355	570	475	550	355	260	275	275	60	30
400	570	475	550	400	260	275	275	60	31

PRESELECTION TABLE MINIBLUE®





ACOUSTIC CHARACTERISTICS MINIBLUE®

- The values Lp4m dB (A) (○) shown on the curves correspond to the sound pressure level to 4m in hemispherical free field on a reflective surface, rejection not connected box.
- The values cond Lw dB (A) (□) indicated on the curves correspond to the total sound power radiated in the upstream duct.
- For the acoustic spectrum of sound power Lw cond dB (A), upstream side, add the following values to the sound power Lw cond dB (A) (□) indicated on the curves.

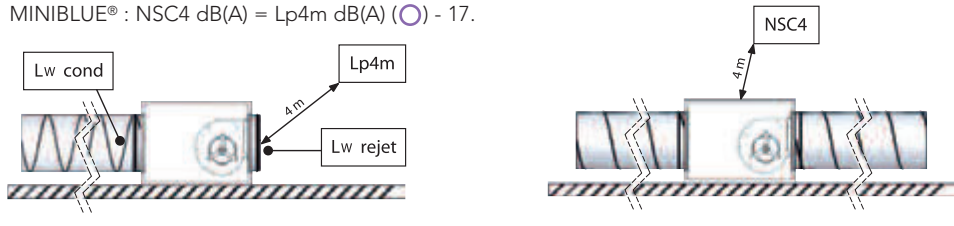
Upstream acoustic spectrum weighting function cond Lw dB (A) (□) Indicated on the curves								
Fréquence	63Hz	125Hz	250Hz	500Hz	1000Hz	2000Hz	4000Hz	8000Hz
Pondération MINIBLUE 125-160 dB(A)	-25	-14	-3	-6	-10	-16	-18	-18
Pondération MINIBLUE 200 dB(A)	-25	-15	-11	-5	-5	-8	-10	-18
Pondération MINIBLUE 250 dB(A)	-15	-8	-4	-5	-12	-19	-18	-19
Pondération MINIBLUE 315 dB(A)	-20	-12	-7	-4	-7	-14	-16	-17
Pondération MINIBLUE 355 dB(A)	-29	-11	-1	-12	-14	-19	-21	-23
Pondération MINIBLUE 400 dB(A)	-23	-9	-1	-14	-17	-21	-23	-27

- The overall sound power radiated to the rejection of the box is given by:
MINIBLUE ®: Lw rejection dB (A) = Lp4m dB (A) (○) + 20.
- For the sound pressure level Lp dB (A) in a hemispherical free field, at a distance, camera placed on the floor reflecting surface upstream side connected discharge side not connected, add the following values in dB Lp4m (A) (○) indicated on the curves.

Pondération Lp à diverses distances en fonction de Lp4m (○)						
Distance	2 m	3 m	4 m	5 m	7 m	10 m
Pondération distance dB(A)	6	2	0	-2	-5	-8

NOTA : Tolerance Values = overall + / - 3 dB (A)
Acoustic spectra + / - 5 dB (A)

- For the sound level 4m (NSC4) connected to the suction and discharge by a sheath as well as the soundproofing box, apply the following unit weights:
MINIBLUE® : NSC4 dB(A) = Lp4m dB(A) (○) - 17.



ELECTRICAL CHARACTERISTICS MINIBLUE®

Modèle MINIBLUE®	Tension alimentation (V / Ph / Hz)	Puissance électrique (W)	Intensité de protection (A)	Temp. Utilisation (°C / °C)	Indice de protection Classe	Protection thermique *
MINIBLUE® 125	230 / 1 / 50	83	0,75	-25 / 60	IP54 / B	PTI
MINIBLUE® 160	230 / 1 / 50	83	0,75	-25 / 60	IP54 / B	PTI
MINIBLUE® 200	230 / 1 / 50	86	1,64	-25 / 40	IP44 / B	PTI
MINIBLUE® 250	230 / 1 / 50	165	1,2	-25 / 60	IP44 / B	PTI
MINIBLUE® 315	230 / 1 / 50	1070	4,3	-25 / 40	IP44 / F	PTI
MINIBLUE® 355	230 / 1 / 50	1040	4,5	-25 / 40	IP44 / F	PTI
MINIBLUE® 400	230 / 1 / 50	1040	4,5	-25 / 40	IP44 / F	PTI

* PTI : Protection thermique intégrée



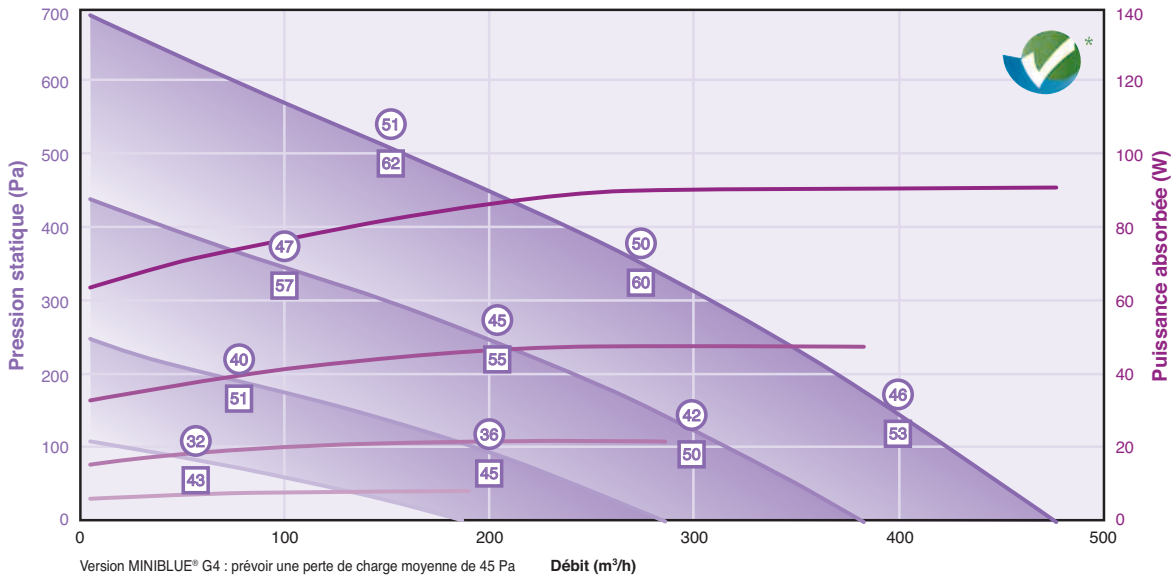
MINIBLUE® 250 LOBBY



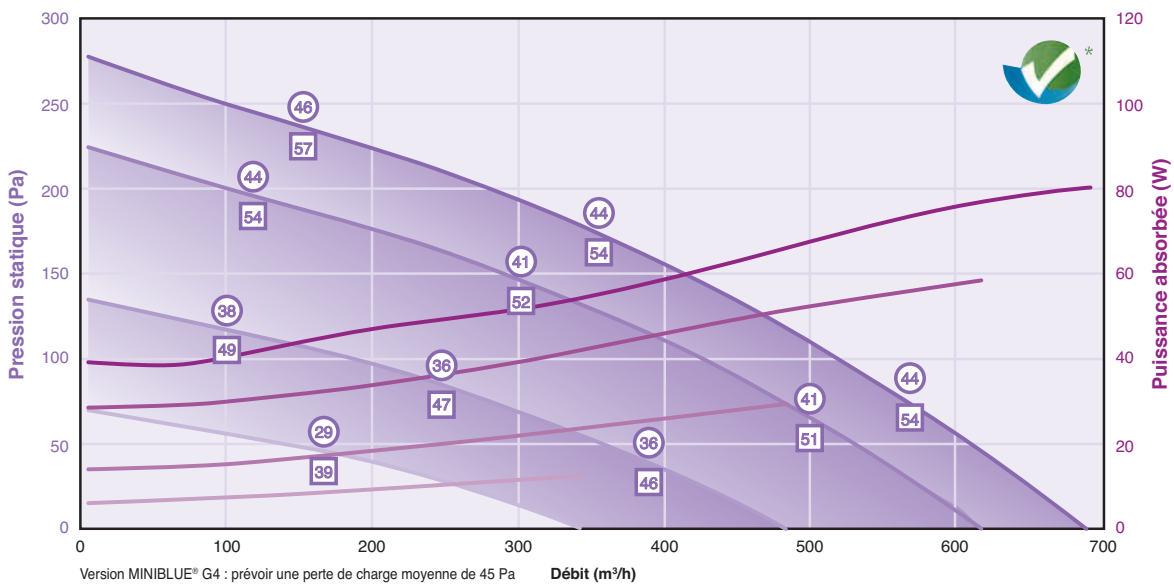
* Nota : The curves are made with suction and discharge chamber connected (D configuration according to NF N 13141-4) nozzles.



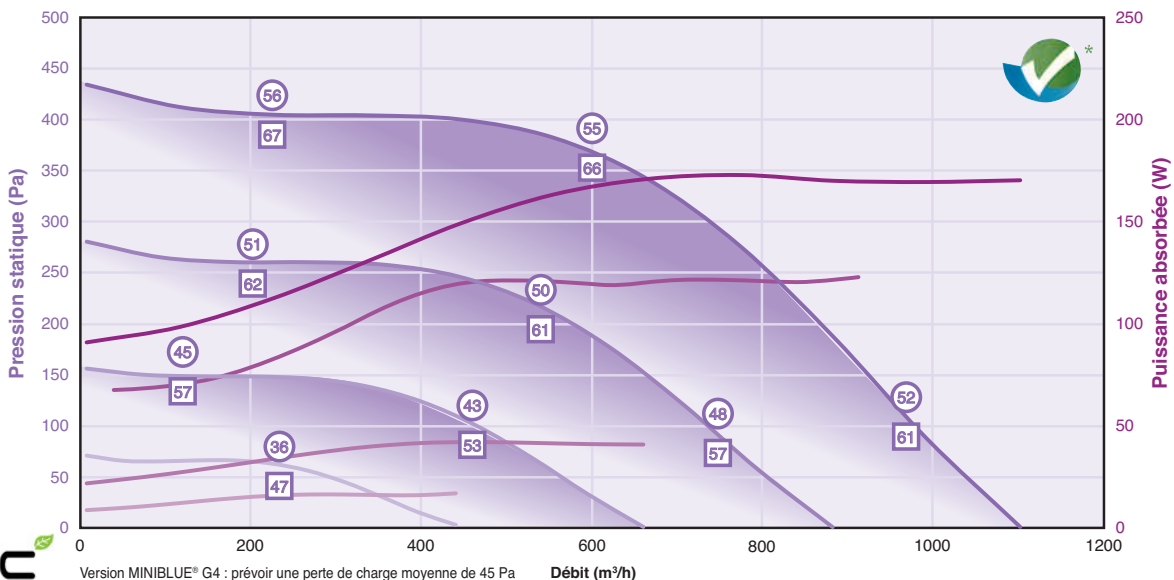
MINIBLUE® 125-160



MINIBLUE® 200

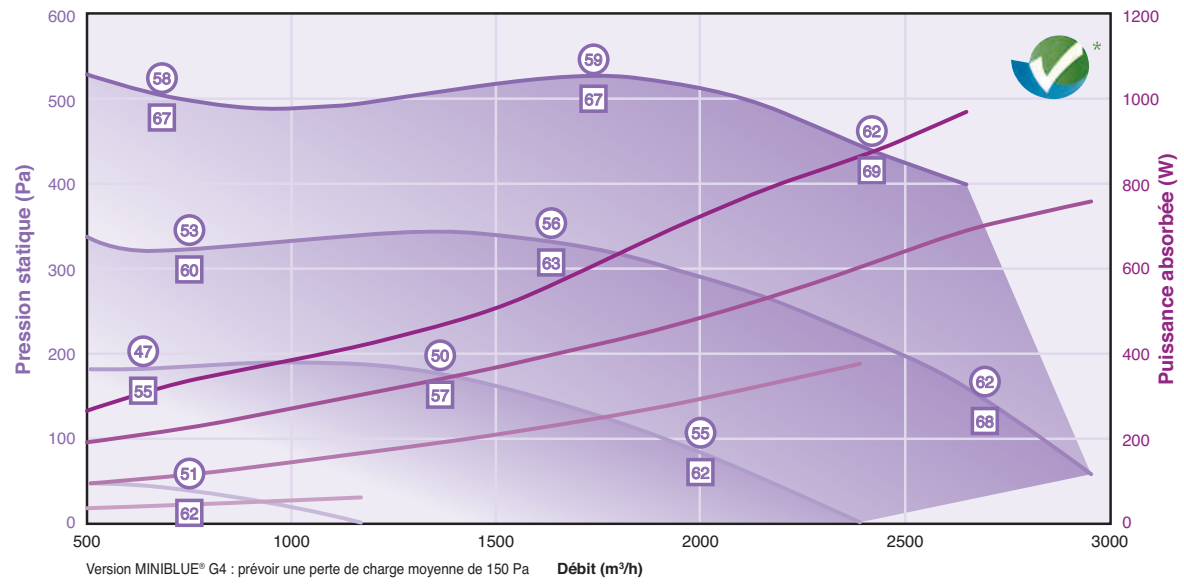


MINIBLUE® 250

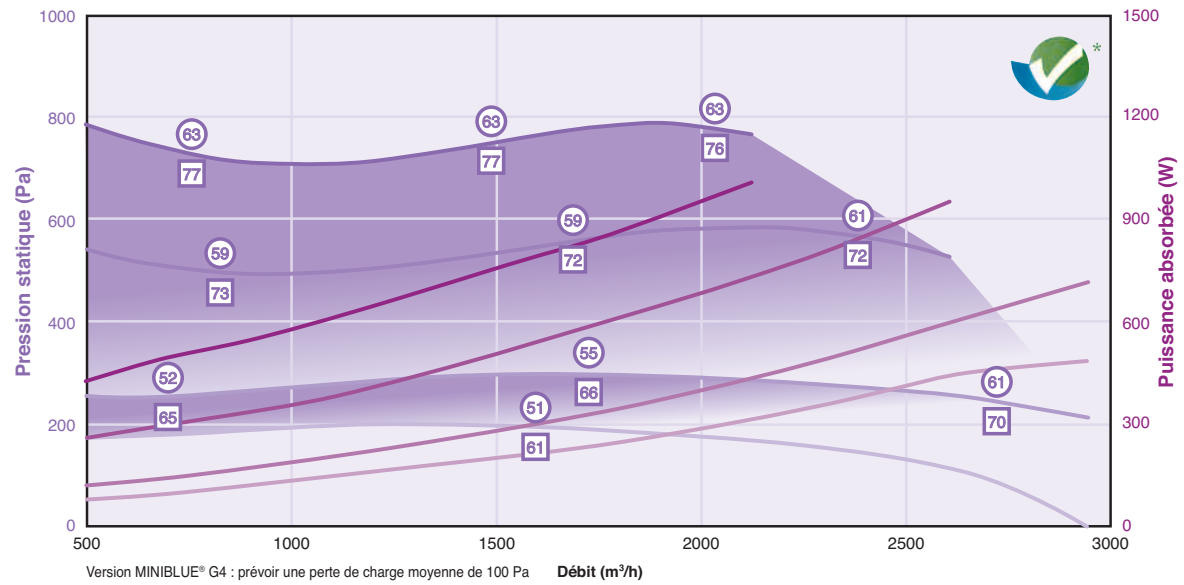




MINIBLUE® 315



MINIBLUE® 355



MINIBLUE® 400

